



Dates for your diary:

Monday 5th June

- INSET day – school closed to children
- Deadline to return Reception 2023 data forms

Tuesday 6th June

- Children return to school at usual times

Thursday 22nd and Friday 23rd June

- Year 4 residential to Fryland's Wood

Friday 30th June

- Sports day, 9 – 11am, for Reception, Year 1 and Year 2

Monday 3rd – Friday 7th July

- Culture Week

Saturday 8th July

- PTA Summer Fair

Monday 10th July

- Nursery sports day, 9.30 – 10.00am

Tuesday 11th July

- Welcome picnic for families starting in Nursery and Reception in September 2023

Wednesday 12th and Thursday 13th July

- Parent/Carer evenings

Thursday 13th July

- Nursery sports day, 1.30 – 2.00pm

Friday 14th July

- Sports day, 9 – 11am, for Year 3, Year 4, Year 5, Year 6

Wednesday 19th July

- Year 6 production performances at 2pm and 7pm, Main Hall

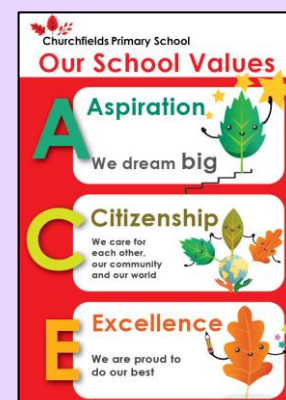
Friday 21st July

- Last day of school year

Dear Parents and Carers,

Another great week at school to finish off the first half of the summer term. We have been talking about leadership in assembly this week, who are leaders in our lives and what great leaders do. We will be working on these skills with the children when we come back – it's never too early to start!

Part of leadership is gathering opinions and ideas from everyone – there are 5 'snapshot surveys' on different topics I would encourage you to complete (they take around 3 – 5 minutes each to complete). Have a wonderful half term and I look forward to welcoming you back on Tuesday 6th June,
Sarah Atherton, Headteacher





Churchfields News



Quality First
Education Trust

Churchfields Road, Beckenham, Kent, BR3 4QY Tel: 020 86505247

Share your views and ideas

From recent surveys and parent/carer forums, a few common themes have come up where I would like to gather the experiences and views of parents and carers more widely.

These surveys are of course optional, you don't have to leave your name if you don't want to and most have 3 – 10 quick multiple-choice questions with options to write more details if you wish.

I would appreciate all responses to come in by **10am on Friday 2nd June** so that I can use the results in our staff training on INSET day.

Thank you so much for your time and contributions to make the school better – if your child is in Year 6 and about to leave us, please do still share your experiences.

Sarah Atherton
Headteacher

Holiday Childcare

We know how important reliable, safe and affordable childcare is to many families, especially in the school holidays. We would like to know how much interest there is to have a holiday childcare provision based at Churchfields as we go into 2023/24 academic year.

[Click here to complete Snapshot Survey: Holiday Childcare](#)

Homework

Homework always generates a great deal of debate and wide range of views (and can be a stressor in family homes!). We would like to know how the current homework arrangement is working for you and how we could improve this for 2023/24.

[Click here to complete Snapshot Survey: Homework](#)

Mixing Classes

Many schools with more than one class in each year group mix up the classes as they go through the school rather than keeping the same children in the same class from Reception to Year 6. We would like to know your response to this.

Important note: this is not mixing children of different ages in the same class or making a 'higher' or 'lower' attaining class in a year group. This would be making equally balanced classes of boys/girls, languages, strengths and needs etc., in the best interests of all children and taking into consideration existing friendship groups.

[Click here to complete Snapshot Survey: Mixing Classes](#)

Behaviour Policy

Making sure children are safe and feel that they belong and are valued at school is essential for them to thrive. We would like to know how our behaviour policy helps (or hinders) children to build strong relationships with their peers and adults and how it helps them to make good behaviour choices or changes when they have made the wrong choice.

[Click here to complete Snapshot Survey: Behaviour Policy](#)

Reading

Reading is central to academic success and can bring great joy to the children as they grow up. We would like to know how your child finds reading, how helpful the books are that we send home and how we could better support you as parents/carers, to help your child's reading.

P.S. There is no judgement about how many times you read at home – we want to get a realistic picture of what families can manage in a busy week!

[Click here to complete Snapshot Survey: Reading](#)



Years 4, 5 and 6 Explore the (Virtual Reality) World

Years 4, 5, and 6 tried on Virtual Reality headsets this week to explore the wonders of our world all from the comfort of a seat in the Small Hall!



Churchfields Football Teams – Training, Fixtures and Trials

Boys' Teams	Girls' Team	Trials for 2023/24 Football Teams	
<p><u>Training:</u> Thursday 8th June</p> <p><u>Matches:</u> Thursday 15th June B Team vs Marian Vian at Churchfields, 1.20pm start</p> <p>Thursday 22nd June A and B Teams vs Marian Vian at Churchfields, 1.20pm start</p>	<p><u>Training:</u> Tuesday 6th June Tuesday 13th June Tuesday 20th June</p> <p><u>Matches:</u> Thursday 15th June Girls' Team vs Marian Vian at Churchfields, 1.20pm start</p>	<p>Boys in Year 4 and 5</p> <p>8am on the field until the start of day, on:</p> <ul style="list-style-type: none"> - Thursday 15th June - Thursday 22nd June - Thursday 29th June - Thursday 6th July - Thursday 13th July - Thursday 20th July 	<p>Girls in Year 3, 4 and 5</p> <p>8am on the field until the start of day, on:</p> <ul style="list-style-type: none"> - Tuesday 27th June - Tuesday 4th July - Tuesday 11th July - Tuesday 18th July
<p>Monday 17th July – Tournament at the Valley for Boys' A, Boys' B and Girls' teams, 12.30pm start</p>			



Reception's Excellent Learners

The Reception staff have been blown away this week by how the children in Reception have been using their environment to create their own games to play together.



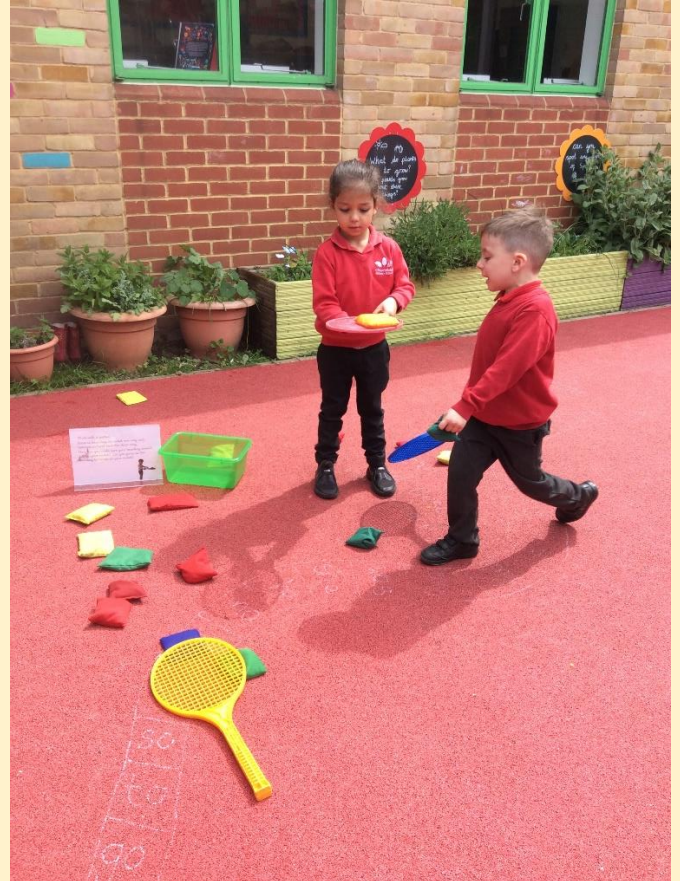


Churchfields News



Quality First
Education Trust

Churchfields Road, Beckenham, Kent, BR3 4QY Tel: 020 86505247





Grade 4 Guitar Hero



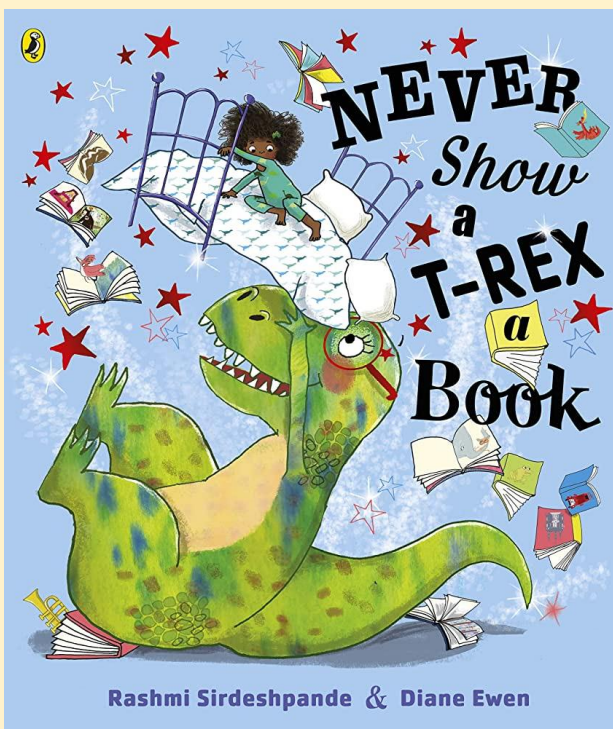
Charlie in Year 6 passed his Grade 4 guitar with merit. You might have seen him busking in the playground at pick up. He's been learning with Danny since Reception and Danny has been an awesome teacher.

Terrific Tap-Dancer



Betty in Year 2 has obtained a distinction in her recent Primary Tap exam, scoring a whopping 90 points!! She looks very proud of her achievement – well done!

Birthday Book Donations



Happy birthday Dylan and thank you for the book!

Book Suggestions

We really appreciate the birthday books that come into school to keep our libraries fresh and exciting.

We have been asked by some parents/carers for ideas for new and interesting books to add to our collection, especially for the older children.

In response to this we have set up wish lists on Amazon that you can use to help choose the books. Please note: you do not need to purchase books from Amazon or only the ones on these lists - all donations are very gratefully received!

[Nursery and Reception wishlist](#)

[Year 1 wishlist](#)

[Year 2 wishlist](#)

[Year 3 wishlist](#)

[Year 4 wishlist](#)

[Year 5 wishlist](#)

[Year 6 wishlist](#)



We are part of the Penge School Uniform Hub

Penge School Uniform Hub



Save money and the planet: buy preloved uniform!

**Sense charity shop,
104 High Street, Penge
(next to the Post Office)**

General uniform suitable for all schools available, as well as specifics for Alexandra, St John's and Churchfields Schools, with more coming soon!

Open Mon-Sat 9am-5pm,
Sun 10am-4pm

Organised by Alexandra Junior School PTFA.
For more info, contact: treasurer@ajsptfa.org.uk
Supported by Penge BID

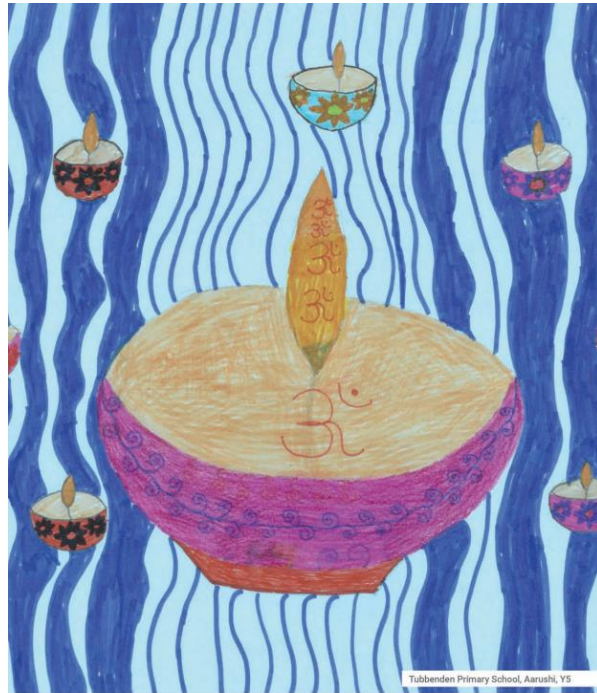


Penge School Uniform Hub!

Pre-loved Churchfields school uniform in sizes age 2 to 15 is now available 7 days a week from the Sense charity shop on Penge High Street. 100s of items in stock - so much it won't all fit on the shop floor, so please ask if you cannot find the size you need. **Dresses, skirts, trousers, shorts, jumpers and cardigans all £1. Polos shirts 50p.** This new collaboration between Sense Penge and multiple local primary schools means that parents now have a single one-stop-shop to find affordable second-hand school uniform for their primary age children. All proceeds to the Sense charity.



Bromley Schools' RE Calendar Competition



Religious Education

Calendar 2022-2023



March 2023



Monday	Tuesday	Wednesday	Thursday	Friday	Saturday	Sunday
		1 St David of Wales (Christian)	2	3	4	5
6 Feast of Esther (Judaism)	7 Purim (Judaism)	8	9	10	11	12
13	14	15	16	17 St Patrick's Day (Christian)	18	19 St Joseph's Day (Christian) Midway Festival (Christian)
20	21 Mardi Gras (Christian) Good Friday (Christian)	22 Easter Monday (Christian)	23	24	25 Annunciation of the Blessed Virgin Mary (Christian)	26 Ascension Day (Christian)
27	28	29	30 Magna Carta Day (Humanism)	31		

Key: ■ Bahá'í ■ Buddhist ■ Christian ■ Hinduism ■ Humanism ■ Judaism
■ Mormon ■ Islam ■ Wiccan/Pagan ■ Rastafarian ■ Shinto ■ Sikhism ■ Zoroastrian

The competition to have a picture chosen for the 2023/24 is now open to all pupils in Bromley schools. This year's themes are:

Reception, Year 1 and Year 2

How do we know they are holy/special? This can include religious leaders or significant figures from religions

Years 3 – 6

What makes a place holy/special? Pupils may choose to focus on places of worship or pilgrimage.

You can see all of last year's winners by [clicking here](#).

If you would like to take part, all entries must be on **A4 portrait** paper, with no wording on the front and preferably on coloured paper and /or using strong bold colours e.g. felt pens or paints rather than paler pencils. Ideally the drawings or paintings should fill the whole page.

The pictures should be **labelled on the back** clearly with the child's name, school and year group –please do not label the front.

Entries should be posted to Andrew Morley, The School Standards Team, First Floor Stockwell Building, Stockwell Close, Bromley BR1 3UH **before Friday 9th June 2023**.

Or you can bring it into school by Tuesday 6th June and we will post it for you.



PENGE FESTIVAL FETE



Saturday 3rd June
11-5

ROYSTON FIELD, FRANKLIN ROAD,
BEHIND SAINSBURYS CAR PARK,
PENGE

- bouncy castle •
- facepainting •
- dog competition •
- cadet competition •
- giant slide •
- entertainment •
- market stalls •
- yummy food •
- and much more!



For more information visit: www.pengefestival.org



Churchfields News



Quality First
Education Trust

Churchfields Road, Beckenham, Kent, BR3 4QY Tel: 020 86505247

Class Assembly Dates 2022/23

Class assemblies will be held in the school's Main Hall, starting at 2.45pm.

Summer Term

15.06.23	Reception – Beech
22.06.23	Year 2 – Hickory
29.06.23	Year 5 - Olive

Any good news, something to share or celebrate with the Churchfields community?

Please do email us on admin@churchfields.q1e.org.uk

Term Dates 2022/23

Summer Term 2023

Last day of Summer 1 term: Friday 26 May

Spring half term holiday: Monday 29 May – Friday 2 June

Inset Day: Monday 5 June – school closed to children

First day of Summer 2 term: Tuesday 6 June

Last day of Summer 2 term: Friday 21 July

Term Dates for 2023/24 on the next page



If you are worried about something
If you are worried about someone else.....



You can talk to
ANYONE who works
for the school



Safeguarding is the
responsibility of EVERYONE

Our first priority is to ensure all children and adults are safe.

Please do talk to any member of staff if you have any worries for yourself or others in our community.



Term Dates 2023/24

Autumn Term 2023

Monday 4 th and Tuesday 5 th September 2023	INSET days, school closed to children
Wednesday 6 th September 2023	First day of Autumn 1 term
Friday 20 th October 2023	Last day of Autumn 1 term
Monday 23 rd to Friday 27 th October 2023	Autumn half term holiday
Monday 30 th October 2023	INSET day, school closed to children
Tuesday 31 st October 2023	First day of Autumn 2 term
Thursday 21 st December 2023	Last day of Autumn 2 term

Spring Term 2024

Monday 8 th January 2024	INSET day, school closed to children
Tuesday 9 th January 2024	First day of Spring 1 term
Friday 9 th February 2024	Last day of Spring 1 term
Monday 12 th to Friday 16 th February 2024	Spring half term holiday
Monday 19 th February 2024	First day of Spring 2 term
Thursday 28 th March 2024	Last day of Spring 2 term

Summer Term 2024

Monday 15 th April 2024	First day of Summer 1 term
Monday 6 th May 2024	May Bank Holiday, school closed
Friday 24 th May 2024	Last day of Summer 1 term
Monday 27 th to Friday 31 st May 2024	Summer half term holiday
Monday 3 rd June 2024	INSET day, school closed to children
Tuesday 4 th June 2024	First day of Summer 2 term
Wednesday 24 th July 2024	Last day of Summer 2 term