



## Points to note:

- **New: Christmas Performances for Parents/Carers**

**Reception:**

Tuesday 13<sup>th</sup> December, 9.30am in the Main Hall at school

**Year 1, Year 2, Year 3 and Acer class:**

Wednesday 14<sup>th</sup> December, 9.30am at St Michael's Church, Beckenham

**Year 4, Year 5, Year 6 and Ash class:**

Wednesday 14<sup>th</sup> December, 1.45pm at St Michael's Church, Beckenham

- **New:** Deadline to order online for Christmas cards designed by your child is Friday 27<sup>th</sup> October – see separate email for details
- **New:** Deadline for wraparound care payments for Autumn 1 is Friday 11<sup>th</sup> November
- **New:** Proposed changes to Nursery admissions for September 2023, see Headteacher's note below
- **New:** Secondary transfer information presentation updated here: <https://www.churchfields-q1e.org.uk/our-school/secondary-transfer/>
- **New:** Midday supervisor vacancy – find out more here: <https://www.churchfields-q1e.org.uk/our-school/work-with-us/>

Dear Parents and Carers,

Seven weeks have flown by and we are at half term already! Thank you for a very positive first half term of the year and it was a pleasure to see so many of you at our parent/carer evenings this week. If you didn't manage to make an appointment, the teachers will be in touch again after the holidays to arrange a time to meet with you.

I'm looking forward to meeting with families who are thinking about joining Churchfields on our upcoming open morning tours – please do share with those in the community that may be interested. The dates are here: <https://www.churchfields-q1e.org.uk/admissions/open-days/>

After half term, we will also be seeking your views about a proposed change to the Nursery admissions arrangements for September 2023 onwards. The aim is to make them simpler and clearer and ultimately to ensure we can offer a great provision to every child by having a consistent pattern of attendance over each week. In summary, the proposal is that:

- there will be one intake per year in September for children who are turning 4 during the academic year
- we will offer a minimum of 20 full time places and up to 12 part time places
- the part time places will have 15 hours of nursery by attending 2 ½ days a week (Monday to Wednesday morning or Wednesday afternoon to Friday, with Wednesday being a half day)

To transition to the new arrangement, those places that were previously agreed for January 2023 will be honoured and, for September 2023 intake only, these children will be offered the choice of place requested.

We are also exploring how wraparound care provision could be extended to Nursery aged children. We will send you the full details and how you can share your views after half term.

In the meantime, I wish you a happy, healthy and enjoyable half term!

With best wishes,

Sarah Atherton  
Headteacher



# Churchfields News



Quality First  
Education Trust

Churchfields Road, Beckenham, Kent, BR3 4QY Tel: 020 86505247

## Can we beat the challenge? 250 donations needed!

We are delighted to be supporting the Bromley Brighter Beginnings (BBB) 'Christmas in a bag' Appeal again this year. BBB support local families experiencing financial difficulty or other hardship. These bags are made up of generous contributions from many schools and groups across the borough. Once put together, they will be full of books, toys, pyjamas, Christmas jumpers, toiletries, sweet treats and supermarket vouchers to buy food. Every bag is made up specifically for each referred family and aims to take the financial strain off those families most in need. The target this year is to reach 500 local Bromley children.

**Churchfields have been challenged to collect 250 chocolate Advent Calendars, we are hopeful we can achieve that target!** If you would like to contribute, we will have our donation boxes outside the school entrance at the start and end of each school day on the week beginning 31<sup>st</sup> October. Thank you so much for your support.



## Poppy Appeal at Churchfields

THE ROYAL BRITISH LEGION  
**POPPY APPEAL**

School council members will be taking donations and selling poppies and other items to raise funds for the Poppy Appeal on the playground after half term – so don't forget to bring some cash if you would like to donate!

## Our School History – Can you help?



Did you know that Churchfields School was founded 132 years ago in 1890? We want to build an archive and a display of our school's history – if you have any photos, newspaper clippings or memories to share, please email [admin@churchfields.q1e.org.uk](mailto:admin@churchfields.q1e.org.uk)

If you are worried about something ....  
If you are worried about someone else.....



You can talk to  
**ANYONE** who works  
for the school

Safeguarding is the  
responsibility of EVERYONE



Our first priority is to ensure all children and adults are safe.

Please do talk to any member of staff if you have any worries for yourself or others in our community.



# Churchfields News



Quality First  
Education Trust

Churchfields Road, Beckenham, Kent, BR3 4QY Tel: 020 86505247

## Year 6 Explore Local History

After studying a map of bombing in the local area we went on a walk to observe how the Blitz in World War Two had affected the buildings in and around Churchfields Road. There were lots of bombs around Birkbeck station to try and disrupt travel. We made many observations and noticed that some houses that were bombed have been replaced with newer buildings using different materials and built with a different design.

Megan and Arthur, Year 6



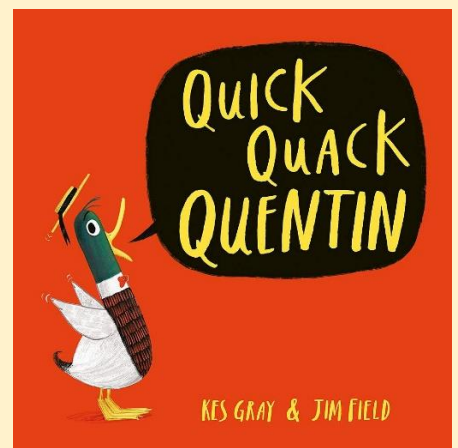
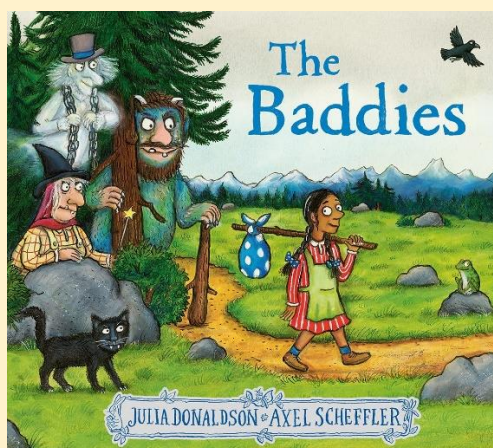
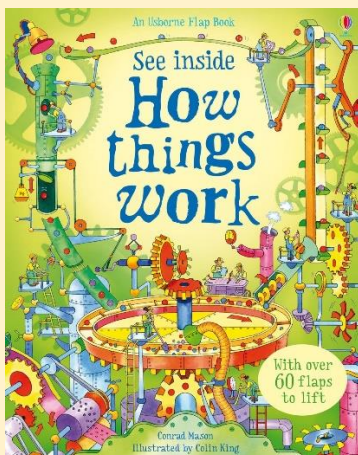


## Gardening Club Update



The children in Gardening Club have been very excited to see the fruits on their tomato plants ripen this week – they have sampled their flavour too!

## Birthday Book Donations



Happy birthday and thank you to Stanley for 'The Baddies', Nikko for 'How Things Work' and Charlie for 'Quack Quack Quentin'. We will enjoy reading them!



# Churchfields News



Quality First  
Education Trust

Churchfields Road, Beckenham, Kent, BR3 4QY Tel: 020 86505247

## Winter is Coming – Can you Help?



The magnificent planting displays, created by parents, are starting to lose their bloom as the weather changes.

We are looking for donations if you have any of the following going spare:

- Bulbs
- Plants (especially winter-flowering plants)

Please bring donations to the space outside Silver Birch classroom or the school office.

Thank you for your support.

## National Poetry Day Competition 2022



# National Poetry Day

This year's theme is "The Environment".

Poems can be long or short, can rhyme or not, and can be serious or funny.

The deadline for the poems is **Friday 4<sup>th</sup> November**.

We can't wait to hear your verses!

## Class Assembly Dates 2022/23

Class assemblies will be held in the school hall, starting at 2.45pm.

### Autumn Term

03.11.22	Hazel
10.11.22	Sycamore
17.11.22	Baobab
24.11.22	Elm

### Spring Term

26.01.23	Oak
02.02.23	Silver Birch
02.03.23	Hickory
09.03.23	Sumac
16.03.23	Olive
23.03.23	Ash

### Summer Term

04.05.23	Cherry
11.05.23	Rowan
18.05.23	Palm
25.05.23	Acer
15.06.23	Beech



# Churchfields News



Quality First  
Education Trust

Churchfields Road, Beckenham, Kent, BR3 4QY Tel: 020 86505247



## Churchfields Primary School



Quality First  
Education Trust

# Open Morning Tours

We pride ourselves on providing a well-rounded, broad and balanced education for all of the children in our community.

Come and find out more about our friendly, vibrant and inclusive school.

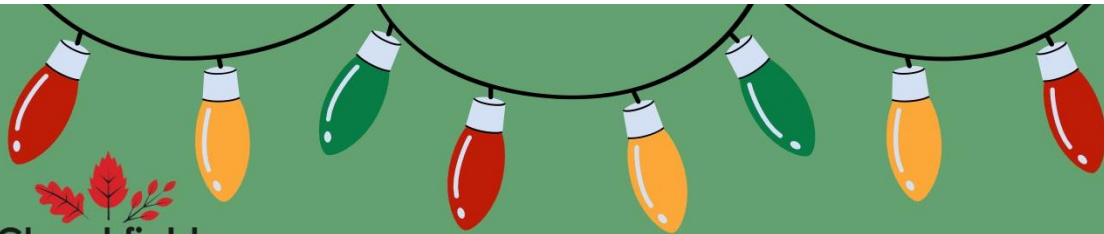
We have small group tours to see the school in action every week. For the list of dates, visit [www.churchfields-q1e.org.uk/admissions/open-days/](http://www.churchfields-q1e.org.uk/admissions/open-days/)  
To book your place, email [admin@churchfields.q1e.org.uk](mailto:admin@churchfields.q1e.org.uk) or call us on 020 8650 5247

We look forward to welcoming you.



  
Ofsted  
Good  
Provider

Churchfields Primary School, Churchfields Road, Beckenham BR3 4QY



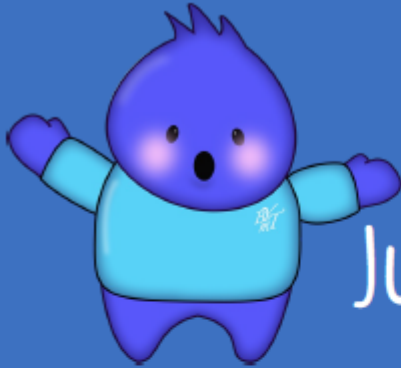
Churchfields  
PTA

## Facepainters needed

**Are you an aspiring Facepainter?  
Need a little Training and Practice?  
Are you available to help Facepaint at  
the Christmas Fete on 3rd December?!**  
**If so, this is for you!!**

**Sevil from Doxa's Face and Body Art will  
be running a FREE workshop on  
Thursday 10th November 6-9pm,  
Small Hall to teach some basic designs.  
You can then put them to practice at the  
Fete!**

**Email [churchfieldspta@gmail.com](mailto:churchfieldspta@gmail.com) to  
book your space!**



## Join the Junior Singers



Do you know a child in year 4, 5 or 6 who loves to sing?  
Then we would like to invite them to come and join our Junior Singers

This is a choir of year 4, 5 & 6 children from across the whole borough  
– and our aim is to get as many schools represented as possible.

This next half a term gives them a chance to try it at half price – then  
hopefully they'll want to join us!

### Dates (Thursdays)

3<sup>rd</sup> November, 4.15-5.30, BYMT  
10<sup>th</sup> November, 4.15-5.30, BYMT  
17<sup>th</sup> November, 4.15-5.30, BYMT  
24<sup>th</sup> November, 4.15-5.30, BYMT

Saturday 26<sup>th</sup> November  
CONCERT, 3pm  
1.30-2.30 rehearsal  
Langley Park School for Boys



**SCAN ME**  
or go to  
[www.bymt.co.uk](http://www.bymt.co.uk)  
and register

Cost: £39. Bursaries are available – please don't let money be a barrier  
Usual cost: £78, for the full term

For any more information, please call the BYMT office on  
020 8467 1566 or email [sseeney@bymt.co.uk](mailto:sseeney@bymt.co.uk)  
Miss S Seeney, Head of Singing, Bromley Youth Music Trust







## Term Dates 2022/23

### Autumn Term

Last day of Autumn 1 term: Friday 21 October

Autumn half term holiday: Monday 24 October – Friday 28 October

First day of Autumn 2 term: Monday 31 October

Last day of Autumn 2 term: Friday 16 December

### Spring Term

First day of Spring 1 term: Wednesday 4 January

Last day of Spring 1 term: Friday 10 February

Spring half term holiday: Monday 13 February – Friday 17 February

First day of Spring 2 term: Monday 20 February

Last day of Spring 2 term: Friday 31 March

### Summer Term

Inset Day: Monday 17 April – school closed to children

First day of Summer 1 term: Tuesday 18 April

Bank holiday: Monday 1 May – school closed to children

Last day of Summer 1 term: Friday 26 May

Spring half term holiday: Monday 29 May – Friday 2 June

Inset Day: Monday 5 June – school closed to children

First day of Summer 2 term: Tuesday 6 June

Last day of Summer 2 term: Friday 21 July

